

THE 109TH ANNUAL MEETING OF THE AMERICAN ASSOCIATION OF IMMUNOLOGISTS

# IMMUN



# OLOGY

APRIL 15–19

2026™

BOSTON, MA

**PROGRAM**  
GUIDE

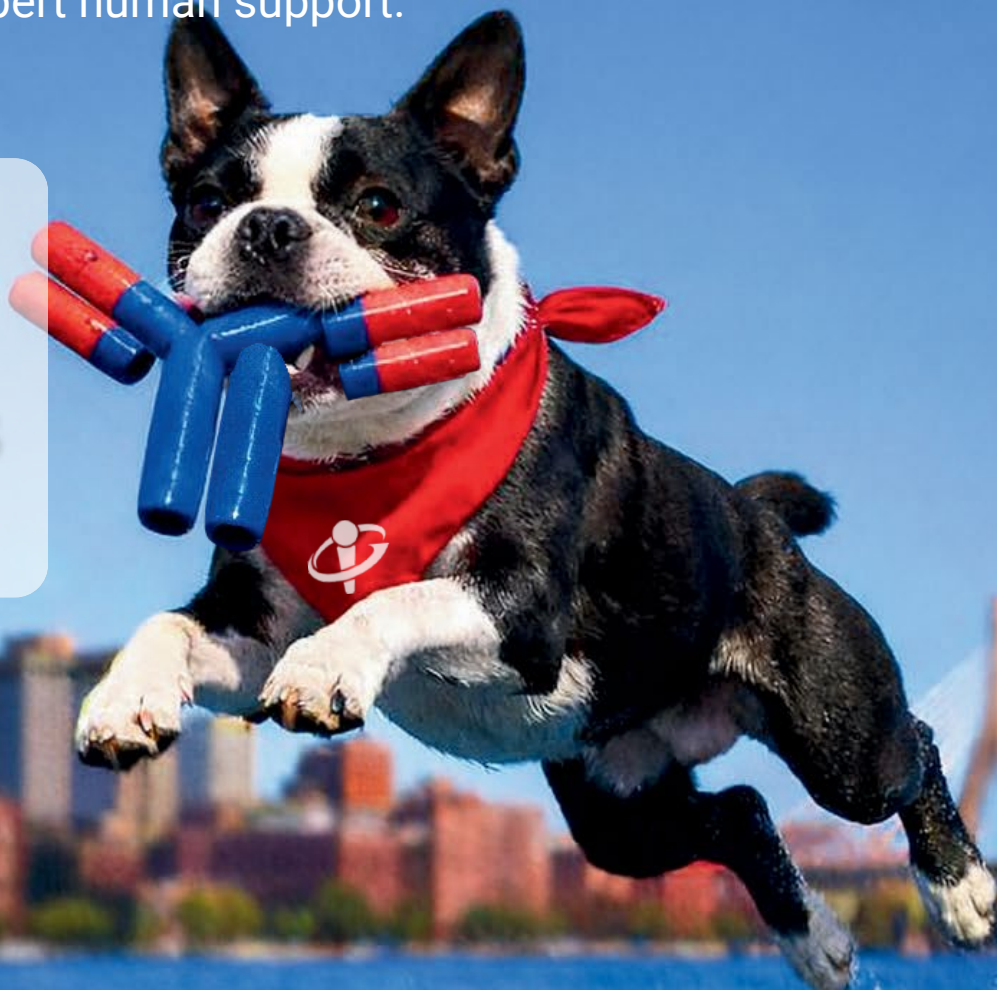
**A** American  
Association of  
Immunologists™

[IMMUNOLOGY2026.AAI.ORG](http://IMMUNOLOGY2026.AAI.ORG)

**Fetch the right tools for your next discovery.**

Reliable, premium reagents, cell lines, and assay kits  
—backed by expert human support.

**CELL LINES**  
**CYTOKINES**  
**ANTIBODIES**  
**& MORE**



**Visit Booth 1011**  
**at IMMUNOLOGY2026™ in Boston.**

Don't miss a chance to win a Boston Terrier plush!



[www.invivogen.com](http://www.invivogen.com)

## WELCOME

## WELCOME

**Dear Colleagues,**

It is a great pleasure to welcome you to Boston for the 109th Annual Meeting of the American Association of Immunologists—IMMUNOLOGY2026™. As both AAI President and a longtime member of the Boston scientific community, it is a privilege for me to host this remarkable gathering in my hometown. Whether you are a first-time attendee or a returning colleague, I am delighted that you are here to join thousands of immunologists from around the world in celebrating discovery, collaboration, and the shared pursuit of advancing health.



This meeting has always been defined by its breadth, its rigor, and most importantly, its people. Over the next five days, you will encounter groundbreaking research, bold new ideas, and opportunities to connect with scientists at every career stage. IMMUNOLOGY2026™ promises to be one of our most engaging meetings yet.

I am especially excited about this year's President's Symposium, which will explore how principles of leukocyte trafficking have evolved over the past three and a half decades—and where they are taking us next. This topic has been at the center of my own scientific career, and I am thrilled to convene an extraordinary panel of speakers whose work continues to push our understanding in new and exciting directions.

We are also launching a new format this year: the Deeper Dive sessions. These intimate, discussion-driven gatherings give attendees the rare opportunity to speak directly with our plenary speakers—the AAI president and the distinguished lecturers. The sessions are by invitation only, and attendees were selected at random from among hundreds expressing interest upon meeting registration. Your enthusiastic response to this new offering underscores how deeply our community values real conversation, mentorship, and the exchange of ideas.

A meeting of this scale can be exhilarating, but also overwhelming. To help attendees make the most of each day, we are introducing Daily Themes, organized under this year's overarching focus: Translational Immunology — Innovations to Clinical Impact. These themes highlight clusters of sessions that share a scientific focus, making it easier to follow areas of interest while still enjoying the full diversity the meeting offers.

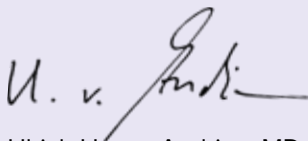
Another initiative close to my heart is the new NextGen Immunologists Day. This full-day, no-cost program invites undergraduate students into our community with guided poster activities, demonstrations, professional skill-building, and networking with scientists at different career stages. Investing in the next generation is essential to keeping our field vibrant, diverse, and forward-looking—and I am gratified that we can open our doors to young scientists who may one day shape the future of immunology.

*(continued on next page)*

We are also pleased to offer, in addition to all the programming at IMMUNOLOGY2026™, a Continuing Medical Education program designed specifically for healthcare providers. On the morning of Sunday, April 19, participants in AAI's Clinical Immunology Update: Immunization program will hear directly from leading immunologists about vaccine development, biomarker-guided clinical trials, and effective approaches to communicating vaccine science. This program reflects AAI's commitment to bridging foundational science with clinical practice in ways that enhance patient care. It is available to IMMUNOLOGY2026™ attendees at a reduced cost, and you can register at [ciu.aai.org](http://ciu.aai.org) or stop by the AAI Booth to learn more.

Thank you for being part of this extraordinary community and for joining us here at IMMUNOLOGY2026™. I hope this meeting energizes your work, expands your connections, and reminds you of the profound impact our field continues to have on science and health.

**Welcome to Boston—and welcome to IMMUNOLOGY2026™.**



Ulrich H. von Andrian, MD, PhD  
President, The American Association of Immunologists

## BioLegend

From Revvity

### Expand the spectrum in immunology

Discover our 35,000 reagents across flow cytometry, multiomics, immunoassays, and cell and gene therapy applications. Each of our innovative products is created by scientists, for scientists—empowering you to make limitless immunology breakthroughs in your workflow.

#### Exhibitor Workshops:

Join our workshops to learn about our newest research tools and developments.

Thomas M. Menino Convention & Exhibition Center, Hall A

#### Thursday, April 16, 12:45–1:30 p.m., Room #104C

Precision in every color: unlocking cell insights with an optimized 46-color spectral flow panel

**Zayda Piedra, PhD**

*Application Scientist, Strategy Segments, BioLegend*

#### Friday, April 17, 1:45–2:30 p.m., Exhibitor Workshop Room #2

High-dimensional immune profiling: characterizing the alloreactive immune response with novel, state-of-the-art technologies

**Zayda Piedra, PhD**

*Application Scientist, Strategy Segments, BioLegend*

# PROGRAM GUIDE

- 1** President's Welcome Letter
- 4** IMMUNOLOGY2026™ Sponsors
- 6** Program Schedule: Wednesday, April 15
- 7** Program Schedule: Thursday, April 16  
*Theme: Autoimmune Initiation, Pathology, and Regulation*
- 11** Program Schedule: Friday, April 17  
*Theme: The Inflammatory Environment*
- 16** Program Schedule: Saturday, April 18  
*Theme: Neuroimmune Interactions*
- 19** Program Schedule: Sunday, April 19
- 23** General Information
- 30** Thomas M. Menino Convention & Exhibitor Center Map

## How to use this guide:

- Sessions linked to the Daily Themes are highlighted in the Program Schedule.
- Find more details about a session by searching for its session code (eg, **CAM1**) in the meeting website or app.
- Download the IMMUNOLOGY2026™ meeting app to view all abstracts, search the program, and create a personalized schedule, and receive important real-time communications from AAI. Scan this QR code to get the app:



A proud platinum sponsor  
of IMMUNOLOGY2026™

Visit us at IMMUNOLOGY2026™ at Booth #611 to learn about our newest reagents.

AAI THANKS OUR  
**IMMUNOLOGY2026™ SPONSORS**

(as of March 19, 2026)

PLATINUM

**BioLegend**  
From Revvity

GOLD



**Miltenyi Biotec**

**Waters™**

Biosciences

Formerly BD Biosciences

SILVER

progress happens together  
**abcam**



**Biogen biotechne®**



**CYTEK®**  
TRANSCEND THE CONVENTIONAL

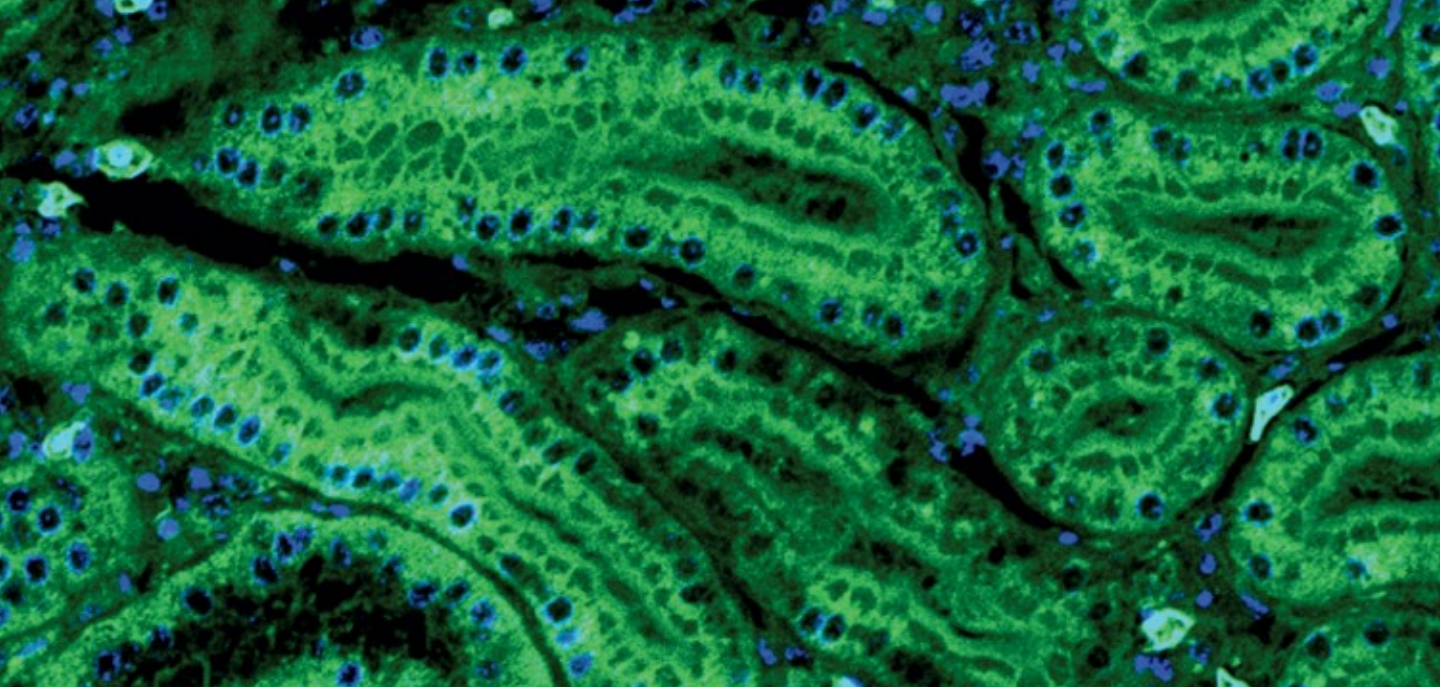
*Lilly*  
A MEDICINE COMPANY

**SONY**



**STEMCELL™**  
TECHNOLOGIES

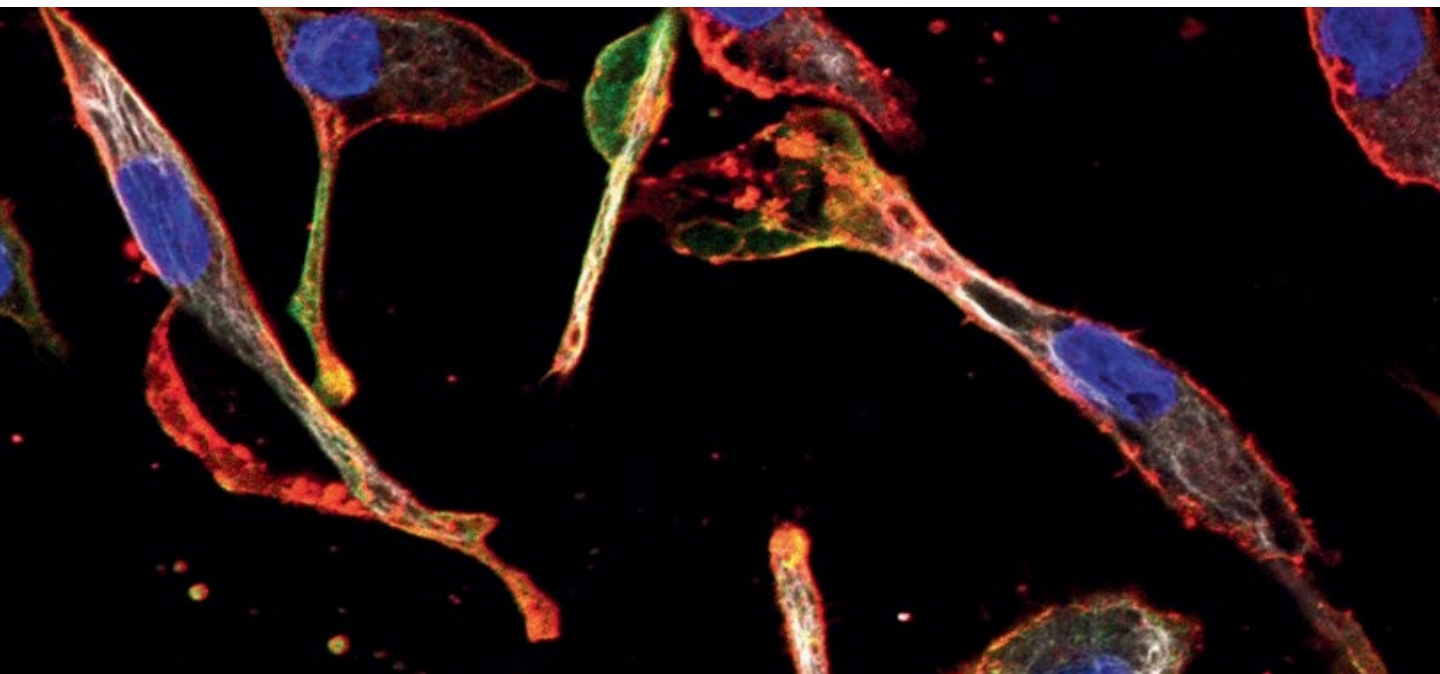
**ThermoFisher**  
SCIENTIFIC



## 2026 SUMMER IMMUNOLOGY COURSES

Build your **immunological repertoire** and learn about trends in your discipline.

EXPLORE COURSES >



# IMMUNOLOGY2026™ PROGRAM

## TUESDAY, APRIL 14, 2026

### Exhibitor Registration/Move-In

12:00PM – 5:00PM • North Lobby

### AAI Council Meeting *(by invitation only)*

12:00PM – 6:00PM

### AAI Council Dinner *(by invitation only)*

6:30PM – 8:00PM

## WEDNESDAY, APRIL 15, 2026

### AAI Council Meeting *(by invitation only)*

8:00AM – 12:00PM • North Lobby

### Speaker Ready Room Open

8:00AM – 7:00PM • Room 252

### Information Desk Open

9:00AM – 6:00PM • North Lobby

### Registration Open

9:00AM – 6:00PM • North Lobby

### Coat and Luggage Storage Open

1:00PM – 6:00PM • North Lobby

## AAI Committee Meeting

### AAI Committee on Public Affairs Meeting

*(by invitation only)*

12:30PM – 3:30PM • Room 154



## Committee-Sponsored Session

**CAREER/** First Things First:  
**NET1** Your Smart Start to  
**IMMUNOLOGY2026™**  
*(ticketed event)*

Sponsored by the AAI Membership  
and Programming Committees

1:00PM – 2:30PM • Room 205

## Block Symposia

### **MUC1** Immunology of the Respiratory Tract

2:45PM – 4:15PM • Room 102

### **TIME1** T Cells in Cancer I

2:45PM – 4:15PM • Room 156

### **COMP1** Immunological -omics Analysis

2:45PM – 4:15PM • Room 151

## Committee-Sponsored Session

### **LYM1** Back to School: A Review of Four Fast-Moving Fields

Sponsored by the AAI Program Committee

Chair: Chandrashekhar Pasare, Cincinnati Children's Hosp. Med. Ctr., USA, AAI Program Committee Chair  
Chair: Elizabeth Leadbetter, UT Health, San Antonio, USA

2:45PM – 4:45PM • Room 104AB

## Guest Symposium

### **VIR1** Host Immune Response and Pathogenesis in Viral Respiratory Infections

Sponsored by the Intl. Soc. for Respiratory Viruses (ISRV)

2:45PM – 4:45PM • Room 153C

## Block Symposia

### **HEM1** T Cell Development

3:15PM – 4:45PM • Room 153AB

### **HUM1** Orchestration of the Adaptive Immune Response

3:15PM – 4:45PM • Room 157

## President's Program

### AAI Lifetime Achievement Award Presentation

Jenny P.-Y. Ting, Univ. of North Carolina, Chapel Hill, USA

### Distinguished Fellows of AAI Class of 2026

#### Acknowledgement

### **CAM1** AAI President's Address: Immunology in Space and Time

Ulrich H. von Andrian, Harvard Med. Sch., USA, AAI President

5:00PM – 6:15PM • Ballroom



## Social Events

**Opening Night Reception**  
6:15PM – 7:30PM • North Lobby

## THURSDAY, APRIL 16, 2026

**Today's Theme:**  
**Autoimmune Initiation, Pathology,  
and Regulation**

**Information Desk Open**  
6:30AM – 6:00PM • North Lobby

**Registration Open**  
6:30AM – 6:00PM • North Lobby

**Speaker Ready Room Open**  
6:30AM – 5:00PM • Room 252

**Coat and Luggage Storage Open**  
7:30AM – 6:00PM • North Lobby

## AAI Committee Meeting

**AAI Committee on the Status of Women Meeting**  
(by invitation only)  
7:00AM – 8:00AM • Room 154

## Sponsored Session

**BA1** **Rewriting Autoimmunity: New  
Immunologic Insights Transforming T1D  
Therapy Development**

Sponsored by Breakthrough T1D  
Chair: Gregory Golden, Breakthrough T1D  
Chair: Joshua Vieth, Breakthrough T1D  
*Continental breakfast will be served.*  
7:00AM – 8:00AM • Room 151

## A Deeper Dive

**CAREER/NET2** **A Deeper Dive with Ulrich von  
Andrian** (registration required)  
7:00AM – 8:00AM • Room 101

## Major Symposium A

**HEM2** **Early Life Immune Development and  
Function**

Chair: Chrysothemis Brown, HHMI, Mem. Sloan  
Kettering Cancer Ctr., USA  
Chair: Petter Brodin, Imperial Col. London and  
Karolinska Inst., GBR, SWE  
8:00AM – 11:15AM • Room 253

## Major Symposium B

**MUC2** **Microbiome Influence on Epithelial-  
immune Crosstalk**

Chair: Tiffany Scharschmidt, UCSF, USA  
Chair: Ramnik J. Xavier, Massachusetts Gen.  
Hosp., USA  
8:00AM – 11:15AM • Ballroom

## Award Lecture

**LYM2** **AAI ASPIRE Awards Symposium**

Tobias V. Lanz, Stanford Univ., USA, *The link between  
Epstein-Barr virus and multiple sclerosis - molecular  
mimicry and beyond*

Anna-Maria Globig\*, Allen Inst. for Immunol., USA,  
*Sympathetic nerves regulate T cell differentiation in  
viral infection and cancer*

Michael Wheeler, Harvard Med. Sch., Brigham and  
Women's Hosp., USA, *Peripheral immune signatures  
that orchestrate complex behavior*

\*2025 recipient with lecture deferred to 2026

8:00AM – 9:30AM • Room 102

## Guest Symposia

**INM1** **New Insights into the Role of Ion  
Channels and Transporters in Immunity**

Sponsored by the Society of General Physiologists  
8:00AM – 9:30AM • Room 104C

**COMP2** **Artificial Intelligence Approaches in  
Immune-Mediated Disease**

Sponsored by DAIT, AMIB, NIAID, NIH  
8:00AM – 9:30AM • Room 205

## Block Symposia

**BA2** Cellular & Molecular Mechanisms of Autoreactivity

8:00AM – 9:30AM • Room 104AB

**MPF1** Microbial Pathogenesis

8:00AM – 9:30AM • Room 153AB

**THER1** Targeting B Cells and Innate Immune Functions in Autoimmunity

8:00AM – 9:30AM • Room 156

**TIME2** T Cells in Cancer II

8:00AM – 9:30AM • Room 157

## Career/Networking Session

**CAREER/NET3** How to Have a Successful Postdoctoral Experience

8:30AM – 9:30AM • Room 153C

## Exhibit Hall

**Exhibit Hall Open** (*Concession stands open and posters available for viewing*)

9:00AM – 4:30PM • Hall A

## Exhibitor Workshops

**EXW1** Age-dependent Layering of Lymphocytes Bifurcates Infection Response

Sponsored by Sony Biotechnology, Inc.

9:30AM – 10:15AM • Exhibitor Workshop Room 1

**EXW2** Animal-Free Strategies for Mitigating Antibody Interference in Modern Immunoassays

Sponsored by Meridian Life Science

9:30AM – 10:15AM • Exhibitor Workshop Room 2

**EXW3** The Fastest Path to Discovery: High-speed Spectral Flow Cytometry and Spectral Imaging for Advanced Cellular Phenotyping in Immunology

Sponsored by Thermo Fisher Scientific

9:30AM – 10:15AM • Exhibitor Workshop Room 3

## Guest Symposia

**TI1** Bridging Immunology and Drug Safety: A New Paradigm

Sponsored by the Health and Environmental Sciences Institute (HESI) Immuno-Safety Technical Committee

9:45AM – 11:15AM • Rom 104C

**LYM3** Underappreciated Functions of B Cells in Cytokine Production and Antigen Presentation

Sponsored by NIAID, NIH

9:45AM – 11:15AM • Room 151

## Block Symposia

**INC1** Innate Immune Defenses in the Epithelium

9:45AM – 11:15AM • Room 102

**EDU1** Immunology Education and Communication

9:45AM – 11:15AM • Room 104AB

**IRM1** Epigenetics and Post-Transcriptional Regulation

9:45AM – 11:15AM • Room 153AB

**TI2** Understanding Immune Responses to Optimize Immune Intervention

9:45AM – 11:15AM • Room 156

**TIPT1** Novel Tumor Therapies

9:45AM – 11:15AM • Room 157

## Career/Networking Session

**CAREER/NET4** How to Convert Your CV into a Résumé

10:00AM – 11:00AM • Room 153C



## AAI Booth Theater

**BOOTH1** How to be the Reviewer You Want to Have

Sponsored by the AAI Publications Committee

10:30AM – 10:55AM • AAI Booth Theater, Booth 731

## Exhibitor Workshops

**EXW4** Scaling Precision Immunology Through Functional Immune Mapping with Single Cell Resolution

Sponsored by Parse Biosciences

10:30AM – 11:15AM • Exhibitor Workshop Room 1

**EXW5** From Epitope to Therapeutics

Sponsored by Immudex USA, LLC

10:30AM – 11:15AM • Exhibitor Workshop Room 2

**EXW6** **Optimizing a 22-Color Multicolor Panel Using the New CytoFLEX LX + Mosaic 88 Module: Application to Asthma Samples**

Sponsored by Beckman Coulter, Inc.

10:30AM – 11:15AM • Exhibitor Workshop Room 3



## AAI Booth Theater

**BOOTH2** **PPFP: Where Scientists Become Policy Advocates**

Sponsored by the Committee on Public Affairs

11:00AM – 11:30AM • AAI Booth Theater, Booth 731



## Poster Hour

**Poster Presentations**

(odd numbered posterboards)

11:30AM – 12:30PM • Hall A

## Guided Poster Walks

**CAREER/** See page 23 for topic categories.

**NET5**

11:45AM – 12:15PM • Hall A

## Exhibitor Workshops

**EXW8** **Reliable Cell Preparations Begin with Automated STEMprep™ Tissue Processing**

Sponsored by STEMCELL Technologies, Inc.

12:45PM – 1:30PM • Exhibitor Workshop Room 1

**EXW9** **Streamlining Identification And In-Depth Assessment Of Human T-Cells Using The Cytek® cFluor® 21-Color Human T-Cell Kit**

Sponsored by Cytek Biosciences, Inc.

12:45PM – 1:30PM • Exhibitor Workshop Room 2

**EXW10** **Bio-Rad StarBright Dyes Expanded Imaging Capabilities of 4-channel Fluorescence Microscopy to at least 6-channels**

Sponsored by Bio-Rad Laboratories, Inc.

12:45PM – 1:30PM • Exhibitor Workshop Room 3

**EXW7** **Precision in Every Color: Unlocking Cell Insights With an Optimized 46-color Spectral Flow Panel**

Sponsored by BioLegend from Revvity

12:45PM – 1:30PM • Room 104C

## Career/Networking Session

**CAREER/** Career Roundtables and Speed

**NET6** **Networking Session** (ticketed event)

Sponsored by the AAI Minority Affairs Committee

12:45PM – 1:45PM • Room 258AB

## Guest Symposia

**INC2** **Immune Responses to Mirror Molecules and Organisms**

Sponsored by the Mirror Biology Dialogues Fund (MDB)

12:45PM – 2:15PM • Room 153C

# BioLegend

From Revvity

Science can't wait. Accelerate your next breakthrough.

Contact your local representative to get a 40% discount on reagents you use daily.

**True-Stain FcX™, True-Nuclear™, and True-Stain™ reagents**

Our True-Stain™ buffers and reagents are designed to optimize your flow cytometry staining. Check out our deals to increase precision in your flow cytometry assays.

**MojoSort™ Dead Cell Removal Kits**

Enrich cell yields by removing dead cells from samples for downstream analysis such as single-cell sequencing, cell line development, and flow cytometry.

**200+ qualifying Ultra-LEAF™ antibodies**

Study cell function with our select functional antibodies that are ultra-low endotoxin and azide-free formulated. They are ideal for neutralization, blocking, activation, or cell depletion.

See full promotion details at [biologend.com/en-us/accelerate-promotion](https://www.biologend.com/en-us/accelerate-promotion)

revvity

**TIPT2 Accelerating CAR-based Approaches for Autoimmunity and Cancer**

Sponsored by the Soc. for Immunotherapy of Cancer (SITC)

12:45PM – 2:15PM • Room 151

**Block Symposia**

**THER2 Therapeutic Modulation of T Cells for Autoimmune Diseases**

12:45PM – 2:15PM • Room 253

**TECH1 Innovations in Bench Techniques**

12:45PM – 2:15PM • Room 205

**VAC1 Learning about Human Immune Responses from Vaccination and Immunotherapy**

12:45PM – 2:15PM • Room 102

**VIR2 CD8<sup>+</sup> T Cell and NK Cell Mediated Antiviral Immunity**

12:45PM – 2:15PM • Room 104AB

**APC1 Antigen Presentation in Immunity, Pathology, and Tolerance**

12:45PM – 2:15PM • Room 153AB

**IRC1 Humoral-innate Immune Crosstalk**

12:45PM – 2:15PM • Room 156

**LYM4 Homeostasis**

12:45PM – 2:15PM • Room 157

**Career/Networking Sessions**

**CAREER/ How to Convert Your CV into a Résumé:**

**NET7 Individual Consulting**  
12:45PM – 2:45PM • Room 154

**CAREER/ Connect with Me Networking**

**NET8 (registration required)**

1:00PM – 1:45PM • Hall A

**Exhibitor Workshops**

**EXW11 Optimizing IVT mRNA Design for Therapeutic Performance**

Sponsored by VectorBuilder, Inc.

1:45PM – 2:30PM • Exhibitor Workshop Room 1

**EXW12 More than just Fluorescence: A Step-by-Step Guide to High-Dimensional Cytometric Analysis Integrating Spatial and Morphological Insights**

Sponsored by Waters™ Biosciences (Formerly BD Biosciences)

1:45PM – 2:30PM • Exhibitor Workshop Room 3



**AAI Booth Theater**

**Fi5A Findings in 5: Autoimmune Initiation, Pathology, and Regulation**  
2:00PM – 2:30PM • AAI Booth Theater, Booth 731



**Poster Hour**

**Poster Presentations**  
(even numbered posterboards)  
2:30PM – 3:30PM • Hall A



**AAI Booth Theater**

**BOOTH3 How to Write a Scientific Paper**  
Sponsored by the AAI Publications Committee  
2:45PM – 3:15PM • AAI Booth Theater, Booth 731

**Award Lecture**

**TIME3 AAI-BD Biosciences Investigator Award Presentation and Lecture**

Generously supported by Waters™ Biosciences (Formerly BD Biosciences)  
Ping-Chih Ho, Univ. of Lausanne, CHE, *Spatial and metabolic guidance on tailoring anti-tumor immunity*  
3:30PM – 4:30PM • Room 153C

**Guest Symposia**

**COMP3 Resource Highlight: immgenT: A Community Reference Atlas for Mouse T Cells**

Chair: David Zemmour, Univ. of Chicago, USA  
3:30PM – 5:30PM • Room 151

**MUC3 Crosstalk of the Environment and the Immune System – Challenges and Opportunities**

Sponsored by the German Soc. for Immunol. (DGfI)  
3:45PM – 5:15PM • Room 104C

## Block Symposia

**BA3** Immunometabolism in Autoimmunity  
3:45PM – 5:15PM • Room 253

**VAC2** Innovations Targeting Adaptive Immune Mechanisms against Viral Pathogens  
3:45PM – 5:15PM • Room 102

**INM2** Pathogen Sensing and Innate Immune Responses  
3:45PM – 5:15PM • Room 156

## Career/Networking Session

**CAREER/** Interactive Workshop: Navigating the  
**NET9** NIH Funding Process  
3:45PM – 5:45PM • Room 258AB

## Block Symposia

**TIPT3** Immune Checkpoints and Beyond I  
4:15PM – 5:45PM • Room 205

**HEM3** Bone Marrow Hematopoiesis  
4:15PM – 5:45PM • Room 104AB

**IRM2** Molecular Mechanisms of T Cell Differentiation and Function  
4:15PM – 5:45PM • Room 157

## Award Lecture

**IRM3** AAI Lancefield Mid-Career Achievement Award Presentation and Lecture

Sponsored by the AAI Committee on the Status of Women

Carla V. Rothlin, Univ. of Minnesota, Twin Cities, USA  
*Mechanisms of restraint: From immune homeostasis to immunoresilience*

4:45PM – 5:45PM • Room 153C

## Distinguished Lecture

**IRM4** Treg Cells, Fate and Specificity

Lecturer: Christophe Benoist, Harvard Med. Sch., USA  
6:00PM – 6:45PM • Ballroom



## Social Events

**AAI Immunology Explained, Ambassadors Reception**

(by invitation only)

7:00PM – 8:30PM • Off property



**AAI Editors Dinner Meeting**

(by invitation only)

7:00PM – 10:00PM • Off property

## FRIDAY, APRIL 17, 2026

**Today's Theme:**  
**The Inflammatory Environment**

**Information Desk Open**

6:30AM – 6:00PM • North Lobby

**Registration Open**

6:30AM – 6:00PM • North Lobby

**Speaker Ready Room Open**

6:30AM – 5:00PM • Room 252

**Coat and Luggage Storage Open**

7:30AM – 6:00PM • North Lobby

## A Deeper Dive

**CAREER/** A Deeper Dive with Christophe Benoist

**NET10** (registration required)

7:00AM – 8:00AM • Room 101

## AAI Committee Meeting

**AAI Minority Affairs Committee Meeting**

(by invitation only)

7:00AM – 8:00AM • Room 154

## Major Symposium C

**INM3** Epigenetic Modifiers as Drivers of Immune Function

Chair: Maziar Divangahi, McGill Univ., CAN

Chair: Anjana Rao, La Jolla Inst. for Immunol., USA

8:00AM – 11:15AM • Room 253

## Major Symposium D

**CAM2** Obesity, Environment, and Immunity

Sponsored by Eli Lilly and Company

Chair: Barbara S. Nikolajczyk, Univ. of Kentucky, USA

Chair: Andrew Hogan, Manooth Univ., IRL

8:00AM – 11:15AM • Ballroom

## Committee-Sponsored Session

### **EDU2** Immunology Teaching Interest Group: Enhancing Your Immunology Teaching

Sponsored by the AAI Education Committee  
Chair: Viviana P. Ferreira, Univ. of Toledo, USA  
Chair: Matthew D. Woolard, Louisiana State Univ., USA  
**8:00AM – 10:00AM • Room 153C**

## Award Lecture

### **IRM5** AAI ASPIRE Awards Symposium

Camila H. Coelho, Icahn Sch. of Med., Mount Sinai, USA, *Discovery and targeting of human B cell epitopes to counter emerging threats*

Sadiya Parveen Nesson, Louisiana State Univ. Hlth., Shreveport, USA, *Harnessing host glutamine metabolism for host-directed tuberculosis therapy*

Brandon J. Dekosky\*, Ragon Inst. of MGH, MIT, and Harvard, USA, *Scalable platforms to study and engineer immune receptors*

\*2025 recipient with lecture deferred to 2026

**8:00AM – 9:30AM • Room 102**

## Guest Symposium

### **TRAN1** The Immunology of Xenotransplantation: From Bench Discovery to Clinical Translation

Sponsored by the Amer. Soc. of Transplantation (AST)  
**8:00AM – 9:30AM • Room 151**

## Block Symposia

### **VIR3** Cytokines and Inflammation in Antiviral Immunity

**8:00AM – 9:30AM • Room 104AB**

### **INM4** Mechanisms of Innate Immunity

**8:00AM – 9:30AM • Room 156**

## Career Resource

### **CAREER/** NIH Resource Room

### **NET11**

**8:00AM – 5:00PM • Room 150**

## Committee-Sponsored Sessions

### **VAC3** The Future of Vaccination and the Critical Need for Evidence-Based Policies

Sponsored by the AAI Committee on Public Affairs  
Chair: Lauren Ehrich, Univ. of Texas, Austin, USA, AAI  
Committee on Public Affairs Chair  
Chair: Marion Pepper, Univ. of Washington, USA  
**9:00AM – 10:30AM • Room 153AB**

### **CAREER/** Sip and Learn: Speed Networking **NET13** with Immunology Educators

*(ticketed event)*

Sponsored by the AAI Education Committee and  
*ImmunoHorizons*

**9:00AM – 10:00AM • Room 258AB**

## Exhibit Hall

**Exhibit Hall Open** *(Concession stands open and  
posters available for viewing)*

**9:00AM – 4:30PM • Hall A**

## Special Event

### **NEXTGEN** NextGen Immunologists Day *(registration required)*

Sponsored by the AAI Education Committee  
**9:00AM – 4:30PM • Room 154**

## Career/Networking Session

### **CAREER/** Interviewing for a Job **NET12**

**9:15AM – 10:15AM • Room 104C**

## Exhibitor Workshops

### **EXWH13** From Discovery to Precision Medicine: Deciphering the Immune Biology of Long COVID

Sponsored by Olink Biosciences  
**9:30AM – 10:15AM • Exhibitor Workshop Room 1**

### **EXWH14** Real-Time Intravital Microscopy for Translational Immune Cell Imaging

Sponsored by IVIM Technology  
**9:30AM – 10:15AM • Exhibitor Workshop Room 2**

**EXWH15** **Specificity by Design: Validation Strategies for Recombinant Monoclonal Antibodies**

Sponsored by Thermo Fisher Scientific  
9:30AM – 10:15AM • Exhibitor Workshop Room 3

## Guest Symposium

**CCR1** **Translating Human Immunology through Cytokine Research**

Sponsored by the Intl. Cytokine and Interferon Soc. (ICIS)  
9:45AM – 11:15AM • Room 151

## Block Symposia

**CAM3** **Lymphocyte and Innate Leukocyte Mastery of Heat, Migration, and Inflammation**

9:45AM – 11:15AM • Room 102

**IRC2** **New Paradigms in T Cell Regulation**

9:45AM – 11:15AM • Room 156

## AAI Business Meeting and Award Presentations

Chair: Loretta L. Doan, AAI Chief Executive Officer

### AAI Distinguished Service Awards

Deepta Bhattacharya, Univ. of Arizona, USA  
Mark H. Kaplan, Indiana Univ. Sch. of Med., USA

### AAI ASPIRE Awards

David A. Braun, Yale Univ., USA  
Camila H. Coelho, Icahn Sch. of Med., Mount Sinai, USA  
Alex Gitlin, Mem. Sloan Kettering Cancer Ctr., USA  
Tobias V. Lanz, Stanford Univ., USA  
Sadiya Parveen-Nesson, Louisiana State Univ. Hlth., Shreveport, USA  
Michael Wheeler, Harvard Med. Sch., Brigham and Women's Hosp., USA

### Pfizer-Showell Award

Siva Karthik Varanasi, UMass Chan Med. Sch., USA

### Lefrançois-BioLegend Memorial Award

Wen Zhang, Weill Cornell Med., USA

### Chambers-Thermo Fisher Scientific Memorial Award

Chen Yao, Univ. of Texas Southwestern Med. Ctr., USA

### Lustgarten-Thermo Fisher Scientific Memorial Award

Girdhari Lal, Natl. Ctr. for Cell Sci., IND  
10:00AM – 11:30AM • Room 104AB



## AAI Booth Theater

**BOOTH4** **Making the Most of Your AAI Membership**

Sponsored by AAI Membership Committee  
10:30AM – 10:55AM • AAI Booth Theater, Booth 731

## Exhibitor Workshops

**EXW16** **One Target, Many Risks: Immunotherapy Challenges from Mechanism to Medicine**

Sponsored by The Health and Environmental Sciences Institute  
10:30AM – 11:15AM • Exhibitor Workshop Room 1

**EXW17** **Seeing Suppression: Spatial Imaging Reveals Endothelial Control of T Cell Memory**

Sponsored by Miltenyi Biotec  
10:30AM – 11:15AM • Exhibitor Workshop Room 2

**EXW18** **High Resolution Immune Insights with Spectral and Imaging Cytometry: From Optimized Panel Performance to Visualizing Neutrophil-Macrophage Interactions in Tumors**

Sponsored by Waters™ Biosciences (Formerly BD Biosciences)  
10:30AM – 11:15AM • Exhibitor Workshop Room 3



## AAI Booth Theater

**BOOTH5** **How to Talk to Legislators**

Sponsored by the AAI Committee on Public Affairs  
11:00AM – 11:30AM • AAI Booth Theater, Booth 731

## Sponsored Session

### The Immunology Podcast Presents: Emerging Therapies for Solid Tumors

Sponsored by STEMCELL Technologies, Inc.  
11:00AM – 12:00PM • Room 157



## Poster Hour

### Poster Presentations

(Odd numbered posterboards)  
11:30AM – 12:30PM • Hall A

## Guided Poster Walks

**CAREER/** See page 23 for topic categories.

### NET14

11:45AM – 12:15PM • Hall A

## Committee-Sponsored Sessions

### T13 Emerging Therapeutics for Human Disease

Sponsored by the AAI Clinical Immunology Committee

Chair: Samik Basu, Cabaletta Bio., AAI Clinical Immunology Committee Chair

Chair: H. Kiyomi Komori, Uniquity Bio.

12:30PM – 2:30PM • Room 102

### VET1 Building Disease Resistance (Through Innovative Approaches) in the Context of Changing Societal Norms and Evading Pathogens

Sponsored by AAI Veterinary Immunology Committee

Chair: Maisie E. Dawes, Western Univ. of Hlth. Sci.

Col. of Vet. Med., USA, AAI Veterinary Immunology Committee Chair

12:30PM – 2:30PM • Room 104C

## Exhibitor Workshops

### EXW19 Enabling Gentle T Cell Workflows with the Highway1™ Cell Sorter

Sponsored by STEMCELL Technologies Inc.

12:45PM – 1:30PM • Exhibitor Workshop Room 1

### EXW20 Reprogramming Immunity: B Cell Vaccines as Emerging Cancer Therapies

Sponsored by Miltenyi Biotec

12:45PM – 1:30PM • Exhibitor Workshop Room 2

### EXW21 High Dimensional Spectral Cytometry Uncovers Immune Features

Sponsored by Beckman Coulter, Inc.

12:45PM – 1:30PM • Exhibitor Workshop Room 3

## Award Lecture

### LYM5 AAI-BioLegend Herzenberg Award Presentation and Lecture

Generously supported by BioLegend from Revvity Facundo Batista, Ragon Inst. of MGH, MIT, and Harvard, USA, *A life with B cells: From activation to antibody responses*

12:45PM – 1:45PM • Room 153C

## Committee-Sponsored Session

### CAREER/ Careers in Science Roundtables

NET15 (ticketed event)

Sponsored by the AAI Committee on the Status of Women

12:45PM – 1:45PM • Room 258AB

## Guest Symposium

### INM5 Novel Insights into Innate Lymphocyte Research: Challenges and Opportunities Across Human Health and Disease

Sponsored by NCI, NIH

12:45PM – 2:15PM • Room 151

## Block Symposia

### BA4 Inflammatory Mechanisms in Systemic Autoimmunity

12:45PM – 2:15PM • Room 253

### T14 Interrogation of Chronic Immunity and Interventional Approaches

12:45PM – 2:15PM • Room 205

### VAC4 Targeting Adaptive Immune Responses against Cancer and Other Pathologies

12:45PM – 2:15PM • Room 104AB

### MUC4 T Cell Responses to the Gut Microbiota

12:45PM – 2:15PM • Room 153AB

### IRC3 Trouble with the Ex: exTregs and Beyond

12:45PM – 2:15PM • Room 156

### MPF2 Adaptive Immune Responses to Microbial Infections

12:45PM – 2:15PM • Room 157

## Career/Networking Session

**CAREER/** Connect with Me Networking

**NET17** (registration required)

1:00PM – 1:45PM • Hall A

## Committee-Sponsored Session

**CAREER/** Careers in Science Keynote Lecture

**NET16**

Sponsored by the AAI Committee on the Status of Women

Akiko Iwasaki, HHMI, Yale Sch. of Med., *Insights gained along my career journey*

1:45PM – 2:15PM • Room 258AB

## Exhibitor Workshops

**EXW22** Next-Generation Screening and Functional Validation of Antigen-Specific TCRs

Sponsored by Cellalecta, Inc.

1:45PM – 2:30PM • Exhibitor Workshop Room 1

**EXW23** High-dimensional Immune Profiling: Characterizing the Alloreactive Immune Response with Novel, State-of-the-art Technologies

Sponsored by BioLegend from Revvity

1:45PM – 2:30PM • Exhibitor Workshop Room 2

**EXW24** Enabling Disease and Immunology Insights Through High Sensitivity Fluid Biomarker Detection and Integrated Cellular Analysis

Sponsored by Abcam

1:45PM – 2:30PM • Exhibitor Workshop Room 3



## AAI Booth Theater

**Fi5B** Findings in 5: The Inflammatory Environment

2:00PM – 2:30PM • AAI Booth Theater, Booth 731



## Poster Hour

Poster Presentations

(even numbered posterboards)

2:30PM – 3:30PM • Hall A



## AAI Booth Theater

**BOOTH6** Artificial Intelligence (AI) in Scientific Publishing: Uses and Guidance for Authors

Sponsored by the AAI Publications Committee

2:45PM – 3:15PM • AAI Booth Theater, Booth 731

## Award Lecture

**LYM6** AAI Meritorious Career Award Presentation and Lecture

David Masopust, Univ. of Minnesota, Twin Cities, USA, *Memory CD8<sup>+</sup> T cells: Quantity, quality, & location*

3:30PM – 4:30PM • Room 153C

## Committee-Sponsored Session

**COMP4** Resource Highlight: Artificial Intelligence (AI) in Research

Sponsored by the AAI Program Committee

Chair: Harinder Singh, Univ. of Pittsburgh, USA

Chair: Arup Chakraborty, MIT, USA

3:30PM – 5:45PM • Room 156

## Guest Symposium

**INM6** NK Cells and Innate Lymphoid Cells in Health and Disease

Sponsored by the Soc. for Natural Immunity (SNI)

3:45PM – 5:15PM • Room 151

## Block Symposia

**MUC5** Regulation of Immunity and Inflammation in the Genital Tract

3:45PM – 5:15PM • Room 253

**TRAN2** From A to X: Next-Gen Targets & Interventions for Alloimmunity, GVHD, and Xenotransplantation

3:45PM – 5:15PM • Room 102

## Guest Symposium

**LYM7 Regulation of Immune Cell Differentiation**  
Sponsored by the Korean Assoc. of Immunologists (KAI) and the Assoc. of Korean Immunologists in America (AKIA)  
4:15PM – 5:45PM • Room 104C

## Block Symposia

**HYP1 Airway Hypersensitivity and Asthma**  
4:15PM – 5:45PM • Room 205

**VET2 Learning from Others—Immunity from the Jawless to Paws and Hooves**  
4:15PM – 5:45PM • Room 104AB

**MPF3 Signaling Pathways Modulating Immune Responses to Microbial Infections**  
4:15PM – 5:45PM • Room 153AB

**TIME4 Cellular Responses and the Tumor Microenvironment**  
4:15PM – 5:45PM • Room 157

## Award Lecture

**CAREER/ AAI Vanguard Award Presentation and NET18 Lecture**  
Sponsored by the AAI Minority Affairs Committee  
Curtis J. Henry, Univ. of Colorado Cancer Ctr., USA,  
*Never working a day in your life: Turning your passions into a career*  
4:45PM – 5:45PM • Room 153C

## Distinguished Lecture

**LYM8 Journey to the Undiscovered Country of B Cell Memory**  
Lecturer: Frances Lund, Univ. of Alabama, Birmingham, USA  
6:00PM – 6:45PM • Ballroom



## Social Event

**President's Service Appreciation Reception** *(by invitation only)*  
Generously supported by BioLegend from Revvity  
7:30PM – 10:00PM • Off property

## SATURDAY, APRIL 18

**Today's Theme:**  
**Neuroimmune Interactions**

**Information Desk Open**  
6:30AM – 6:00PM • North Lobby

**Registration Open**  
6:30AM – 6:00PM • North Lobby

**Speaker Ready Room Open**  
6:30AM – 5:00PM • Room 252

**Coat and Luggage Storage Open**  
7:30AM – 6:00PM • North Lobby

## A Deeper Dive

**CAREER/ A Deeper Dive with Frances Lund NET19** *(registration required)*  
7:00AM – 8:00AM • Room 101

## AAI Committee Meeting

**AAI Education Committee Meeting** *(by invitation only)*  
7:00AM – 8:30AM • Room 154

## Major Symposium E

**NEUR1 Neuroimmune Landscapes Across the Body: Circuitry and Cytokines**  
Chair: Daniel H. Kaplan, Univ. of Pittsburgh, USA  
Chair: Brian S. Kim, Icahn Sch. of Med. at Mount Sinai, USA  
8:00AM – 11:15AM • Room 253

## Major Symposium F

**LYM9 20 Years of Th17 Cells: Discovery and Clinical Impact**  
Chair: Sarah L. Gaffen, Univ. of Pittsburgh, USA  
Chair: Vijay K. Kachroo, Gene Lay Inst. of Immunol. and Inflammation, USA  
8:00AM – 11:15AM • Ballroom

## Award Lecture

### **LYM10** AAI ASPIRE Awards Symposium

David A. Braun, Yale Univ., USA, *Determinants and augmentation of effective anti-tumor immunity in kidney cancer*

Alex Gitlin, Mem. Sloan Kettering Cancer Ctr., USA, *Insights into VEXAS syndrome: How the cell death machinery unleashes inflammation*

8:00AM – 9:00AM • Room 102

## Committee-Sponsored Session

### **EDU3** Conversations that Connect: Helping the Public Understand, Trust, and Engage with Science

Sponsored by the AAI Public Communications Committee

Chair: Ross Kedl, Univ. of Colorado Anschutz, USA, Chair of AAI Public Communications Committee

Chair: Aimee Pugh-Bernard, Univ. of Colorado Anschutz, USA

8:00AM – 9:30AM • Room 151

## Guest Symposia

### **COMP5** Systems-level Human Immune Profiling Data Resources and Analysis

Sponsored by the Human Immunol. Project Consortium (HIPC)

8:00AM – 9:30AM • Room 153C

### **HUM2** Surprising Insights on Human Immunology from the Study of Monogenic Inborn Errors of Immunity

Sponsored by the Clin. Immunol. Soc. (CIS)

8:00AM – 9:30AM • Room 104C

## Block Symposia

### **HUM3** Tissue and Mucosal Immunity

8:00AM – 9:30AM • Room 104AB

### **TIME5** Tumor and Immune Cell Crosstalk

8:00AM – 9:30AM • Room 156

### **NEUR2** Neurodegenerative & Autoimmune Disorders

8:00AM – 9:30AM • Room 157

## Career Resource

### **CAREER/** NIH Resource Room

**NET20**

8:00AM – 5:00PM • Room 150

## Exhibit Hall

**Exhibit Hall Open** (Concession stands open and posters available for viewing)

9:00AM – 4:30PM • Hall A

## Committee-Sponsored Sessions

### **T15** Modeling the Human Immune Response

Sponsored by the AAI Clinical Immunology Committee  
Chair: Samik Basu, Cabaletta Bio., AAI Clinical Immunology Committee Chair

Chair: Robert Fairchild, Cleveland Clin., USA

9:15AM – 11:15AM • Room 153AB

### **CAREER/** Professions in Biotech: Panel

**NET21** Discussion and Networking

(ticketed event)

Sponsored by the AAI Education Committee

Chair: Jane Grogan, Biogen, USA

9:15AM – 11:15AM • Room 258AB

## Exhibitor Workshops

### **EXW25** Small Molecule Drug Discovery Utilizing a Multiplex Cytokine Detection Platform

Sponsored by Bio-Techne

9:30AM – 10:15AM • Exhibitor Workshop Room 1

## Guest Symposia

### **T16** A New Era in Interdisciplinary Immunotherapy

Sponsored by the Chinese Soc. for Immunol. (CSI)

9:45AM – 11:15AM • Room 153C

### **HUM4** Complement—Key Modulator of Tissue Immunity and Inflammation

Sponsored by the Intl. Complement Soc. (ICS)

9:45AM – 11:15AM • Room 205

## Block Symposia

**HUM5** Animal Models and Multi-omics Technology

9:45AM – 11:15AM • Room 102

**NEUR3** Immunity at CNS Barriers and Borders

9:45AM – 11:15AM • Room 104AB

**HYP2** Immediate Hypersensitivity

9:45AM – 11:15AM • Room 151

**TIME6** Immune Cells in the Tumor Microenvironment I

9:45AM – 11:15AM • Room 156

**VAC5** Mechanistic Insights into Determinants of Vaccine Immunogenicity

9:45AM – 11:15AM • Room 157



### AAI Booth Theater

**BOOTH7** Five Things You Should Know About Advocacy

Sponsored by the AAI Committee on Public Affairs

10:30AM – 10:55AM • AAI Booth Theater, Booth 731



**BOOTH8** Why Talk About Science? Creating a Culture Where Communication Thrives

Sponsored by the AAI Public Communications Committee

11:00AM – 11:30AM • AAI Booth Theater, Booth 731



### Poster Hour

**Poster Presentations**

(Odd numbered posterboards)

11:30AM – 12:30PM • Hall A

## Guided Poster Walks

**CAREER/** See page 23 for topic categories.

**NET22**

11:45AM – 12:15PM • Hall A

## Guest Symposium

**BA5** Autoimmunity, Neurodegeneration, and Aging

Sponsored by NIA, NIH

12:30PM – 2:30PM • Room 104C

## Award Lecture

**T17** AAI-Steinman Award for Human Immunology Research Presentation and Lecture

Alessandro Sette, La Jolla Inst. for Immunol., USA, *Adaptive T cell immunity in infection, vaccination, and neurodegeneration*

12:45PM – 1:45PM • Room 153C

## Block Symposia

**NEUR4** Peripheral & Central Neuroimmune Interactions

12:45PM – 2:15PM • Room 253

**TIPT4** Molecular Mechanisms of Tumor Immunity

12:45PM – 2:15PM • Room 205

**COMP6** Computational Tool Development

12:45PM – 2:15PM • Room 102

**LYM11** Regulating Adaptive Responses

12:45PM – 2:15PM • Room 104AB

**TECH2** Technical Innovations for Therapies

12:45PM – 2:15PM • Room 151

**CCR2** Pathophysiology of Cytokines and Chemokines

12:45PM – 2:15PM • Room 153AB

**INC3** Microenvironmental Influences on Innate Immunity

12:45PM – 2:15PM • Room 156

**MUC6** Emerging Topics in Mucosal Immunology

12:45PM – 2:15PM • Room 157

## Career/Networking Session

**CAREER/** Connect with Me Networking

**NET23** (registration required)

1:00PM – 1:45PM • Hall A

## AAI Committee Meeting

### AAI Membership Committee Meeting

(by invitation only)

1:00PM – 2:00PM • Room 154



### AAI Booth Theater

#### **Fi5C** Findings in 5: Neuroimmune Interactions

2:00PM – 2:30PM • AAI Booth Theater, Booth 731



### Poster Hour

#### Poster Presentations

(Even numbered posterboards)

2:30PM – 3:30PM • Hall A



### AAI Booth Theater

#### **BOOTH9** Recommended Immunology Learning Objectives for MedEd

Sponsored by the AAI Education Committee

2:45PM – 3:15PM • AAI Booth Theater, Booth 731

## President's Symposium

### AAI Excellence in Mentoring Award Presentation

Olivera J. Finn, Univ. of Pittsburgh Sch. of Med., USA

#### **CAM4** Going Places: The Multi-Step Adhesion Cascade - 35 Years and Counting

Chair: Ulrich H. von Andrian, Harvard Med. Sch., USA, AAI President

Eugene C. Butcher, Stanford Sch. of Med., USA, *The*

*many steps to an understanding of leukocyte homing*

Timothy A. Springer, Harvard Med. Sch., USA, *Integrin agonists: New tools for organoids*

Federica Sallusto, ETH Zurich, CHE, *Linking T cell differentiation and trafficking*

Paul Kubas, Univ. of Calgary, CAN, *Recruitment of immune cells from vascular and avascular sites to altered tissues*

3:45PM – 5:45PM • Ballroom

## Distinguished Lecture

#### **IRM6** Counting to 9: The Amazing Adventures of the 9<sup>th</sup> Interleukin

Lecturer: Mark H. Kaplan, Indiana Univ. Sch. of Med., USA

6:00PM – 6:45PM • Ballroom



### Social Event

#### **IMMUNOLOGY2026™** Gala (ticketed event)

Generously supported by BioLegend from Revvity

7:30PM – 10:00PM • Moakley Courthouse

## SUNDAY, APRIL 19, 2026

### Information Desk Open

6:30AM – 12:00PM • North Lobby

### Registration Open

6:30AM – 12:00PM • North Lobby

### Speaker Ready Room Open

6:30AM – 11:00AM • Room 252

### Coat and Luggage Storage Open

7:30AM – 1:00PM • North Lobby

## A Deeper Dive

#### **CAREER/** A Deeper Dive with Mark Kaplan

**NET24** (registration required)

7:00AM – 8:00AM • Room 101

## Major Symposium G

#### **T18** Therapeutic and Translational Immunology\*

\*Topic requested by IMMUNOLOGY2025™ attendees

Chair: Jane Grogan, Biogen

Chair: Jamie Spangler, Johns Hopkins Univ., USA

8:00AM – 11:15AM • Room 253

## Major Symposium H

### **CAM5** Resolution of Inflammation

Chair: Charles Nicholas Serhan, Brigham & Women's Hosp.; Harvard Univ., USA

Chair: Ruslan Medzhitov, HHMI, Yale Univ. Sch. of Med., USA

8:00AM – 11:15AM • Ballroom

## Guest Symposium

### **LYM12** Developmental Exposures in Early Life that Impact Immune Development and Function

Sponsored by NIEHS, NIAID, NIH

8:00AM – 9:30AM • Room 151

### **LYM13** Remember Me!—Exploration of the Full Spectrum of Immune Memory

Sponsored by the Canadian Society of Immunology (CSI)

8:00AM – 9:30AM • Room 153C

## Block Symposia

### **COMP7** Development of Statistical, Machine Learning, and Genetic Models

8:00AM – 9:30AM • Room 102

### **VIR4** CD4<sup>+</sup> T Cell and B Cell Mediated Immunity against Viruses

8:00AM – 9:30AM • Room 104AB

### **IRC4** Dynamic Control of T Cell Activation

8:00AM – 9:30AM • Room 153AB

### **TIME7** Immune Cells in the Tumor Microenvironment II

8:00AM – 9:30AM • Room 156

## CME Presentation

### **CME** Clinical Immunology Update: Immunizations *(ticketed event)*

8:30AM – 12:00PM • Room 104C

## Block Symposia

### **VAC6** Innovations in Vaccine Adjuvants and Immune Modulation

9:45AM – 11:15AM • Room 102

### **INC4** Innate Defenses against Pathogens

9:45AM – 11:15AM • Room 104AB

### **IRM7** Regulation of B Cell Responses

9:45AM – 11:15AM • Room 151

### **HUM6** Primary Immune Deficiency and Immune Dysregulation

9:45AM - 11:15AM • Room 153AB

### **TIME8** Immune Cells in the Tumor Microenvironment III

9:45AM – 11:15AM • Room 156

## AAI Committee Meeting

**AAI Program Committee Meeting** *(by invitation only)*

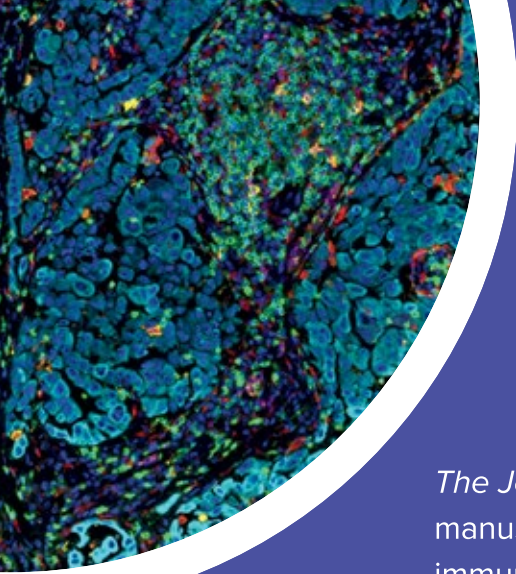
11:45AM - 1:30PM • Room 154

# CLINICAL IMMUNOLOGY UPDATE

Stay **Sunday, April 19**, for **Clinical Immunology Update: Immunization** to learn from renowned immunologists and translate cutting-edge vaccine science into everyday patient care.

Register for **FREE** today and earn **3 CE** (ACCME, ANCC, AAPA) credits!





# WHY PUBLISH in *The Journal of Immunology*

*The Journal of Immunology (The JI)* publishes peer-reviewed manuscripts describing novel findings in all areas of experimental immunology, including both basic and clinical studies. There are many reasons to publish with *The JI*. Discover the top five:

Learn more



- Supports the American Association of Immunologists, a society publisher
- Top cited research
- Global influence
- Reduced author fees
- Range of article types available

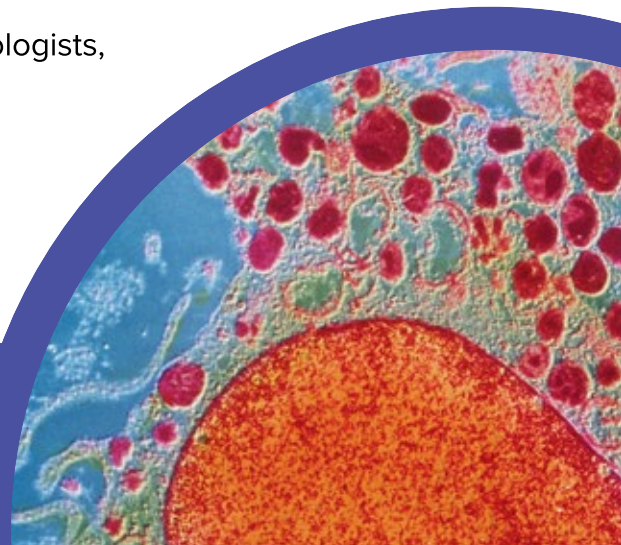
## WHY PUBLISH

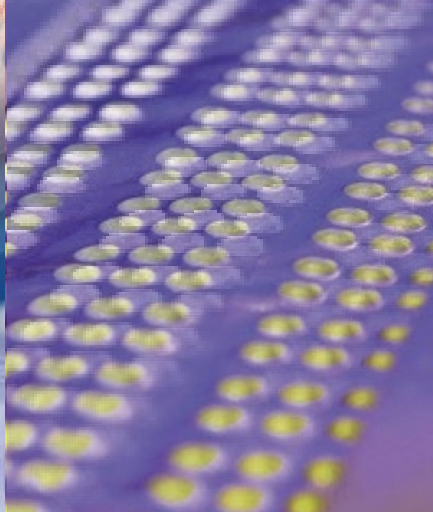
### in ImmunoHorizons

*ImmunoHorizons* is a fully open access peer-reviewed journal committed to advancing the knowledge of immunology and immunology education. There are many reasons to publish with *ImmunoHorizons*. Discover the top five:

- Supports the American Association of Immunologists, a society publisher
- Scientific rigor
- Fully open access
- Reduced author fees
- Focus on Immunology Education

Learn more





# *The Journal of* **Immunology**

## **Call for Papers** **IMMUNOLOGY2026™**

THE 109TH ANNUAL MEETING OF THE AMERICAN ASSOCIATION OF IMMUNOLOGISTS

# **IMMUNOLOGY**

## **2026™**

**Don't Let Your Boston Breakthrough End with a Poster or Podium Presentation!**

*The Journal of Immunology (The JI)* invites you to expand your conference abstract into a full-length manuscript for our upcoming special collection. Showcase your groundbreaking research to the global immunology community.

Submit your manuscript to the IMMUNOLOGY2026™ special collection today:



**A**merican  
Association of  
Immunologists™

# GENERAL INFORMATION

## INFORMATION DESK

### Level 1, North Lobby

WEDNESDAY, APRIL 15	9:00 AM – 6:00 PM
THURSDAY, APRIL 16 – SATURDAY, APRIL 18	6:30 AM – 6:00 PM
SUNDAY, APRIL 19	6:30 AM – 12:00 PM

## REGISTRATION

### Level 1, North Lobby

WEDNESDAY, APRIL 15	9:00 AM – 6:00 PM
THURSDAY, APRIL 16 – SATURDAY, APRIL 18	6:30 AM – 6:00 PM
SUNDAY, APRIL 19	6:30 AM – 12:00 PM

## EXHIBIT HALL

### Level 0, Exhibit Hall A

THURSDAY, APRIL 16 – SATURDAY, APRIL 18	9:00 AM – 4:30 PM
--	-------------------

## AAI BOOTH

### Level 0, Exhibit Hall A, Booth 731

Stop by and meet the AAI scientists and staff who work on your behalf. Learn about the benefits of membership and AAI awards and fellowship programs. The AAI Booth Theater will host short, informal panels and presentations, including the new Findings in 5 sessions for late-breaking abstracts.

## POSTER SESSIONS

### Level 0, Exhibit Hall A

THURSDAY, APRIL 16 – SATURDAY, APRIL 18
11:30 AM – 12:30 PM (odd-numbered posterboards)
2:30 PM – 3:30 PM (even-numbered posterboards)

Poster sessions will be split into two unopposed blocks daily. Posters on odd-numbered boards will be presented during the first block; posters on even-numbered boards will be presented during the second block. All posters will be viewable for the entire day of their presentation.

## POSTER HELP DESK

### Level 0, Exhibit Hall A

THURSDAY, APRIL 16 – SATURDAY, APRIL 18	7:00 AM – 9:30 AM
--	-------------------

## GUIDED POSTER WALKS

### Level 0, Exhibit Hall A

Especially for first-time attendees, the poster sessions can feel overwhelming. This year, you can join a poster walk led by experienced scientists. These walks will help you to explore cutting-edge research on display in the poster hall in a guided, interactive format. Each day will highlight different topic categories.

### TOPIC CATEGORIES FOR THURSDAY, APRIL 16, 11:45 AM – 12:15 PM

Basic Autoimmunity (BA)  
 Computational and Systems Immunology (COMP)  
 Immune Response Regulation: Cellular Mechanisms (IRC)  
 Immune Response Regulation: Molecular Mechanisms (IRM)  
 Innate Immune Responses and Host Defense: Molecular Mechanisms (INM)  
 Microbial, Parasitic, and Fungal Immunology (MPF)  
 Therapeutic Approaches to Autoimmunity (THER)  
 Veterinary and Comparative Immunology (VET)

### TOPIC CATEGORIES FOR FRIDAY, APRIL 17, 11:45 AM – 12:15 PM

Classical and Non-classical Antigen Presenting Cells (APC)  
 Cytokines and Chemokines and their Receptors (CCR)  
 Immediate Hypersensitivity, Asthma, and Allergic Responses (HYP)  
 Immune Mechanisms of Human Disease (HUM)  
 Immunology Education and Communication (EDU)  
 Mucosal and Regional Immunology (MUC)  
 Transplantation Immunology (TRAN)  
 Tumor Immunology: Checkpoints, Prevention, and Treatment (TIPT)

## TOPIC CATEGORIES FOR

**SATURDAY, APRIL 18, 11:45 AM – 12:15 PM**

Cellular Adhesion, Migration, and Inflammation (CAM)

Hematopoiesis and Immune System Development (HEM)

Innate Immune Responses and Host Defense: Cellular Mechanisms (INC)

Lymphocyte Differentiation and Peripheral Maintenance (LYM)

Neuroimmunology (NEUR)

Technological Innovations in Immunology (TECH)

Translational and Interventional Immunology (TI)

Tumor Immunology: Cellular Responses and Tumor Microenvironment (TIME)

Vaccines and Immunotherapy (VAC)

Viral Immunology (VIR)

## SPEAKER READY ROOM

**Level 2, Room 252**

WEDNESDAY, APRIL 15 8:00 AM – 7:00 PM

THURSDAY, APRIL 16 –  
SATURDAY, APRIL 18 6:30 AM – 5:00 PM

SUNDAY, APRIL 19 6:30 AM – 11:00 AM

Please come to the Speaker Ready Room (SRR) a **minimum of 4 hours in advance of your talk** to be sure your presentation is working properly on our systems. An audio/visual technician will be on duty to ensure a smooth transition between each speaker in meeting rooms, to answer any equipment questions, and to adjust sound levels to your requirements.

Upon arrival at the SRR, a technician will check you in, upload your presentation if necessary, and then assign you to a preview station where you will be able to review and edit your presentation and view exactly how it will appear in your session room.

For AM sessions, finalize your presentation by the SRR closing time the day before.

For PM Sessions, finalize your presentation by 11:30 AM the same day as your presentation.

## EXHIBIT REGISTRATION

**Level 1, North Lobby**

TUESDAY, APRIL 14 12:00 PM – 5:00 PM

WEDNESDAY, APRIL 15 9:00 AM – 6:00 PM

THURSDAY, APRIL 16–  
SATURDAY, APRIL 18 6:30 AM – 6:00 PM

## EXHIBITOR SERVICES DESK

**Level 0, Exhibit Hall A**

TUESDAY, APRIL 14 12:00 PM – 5:00 PM

WEDNESDAY, APRIL 15 9:00 AM – 6:00 PM

THURSDAY, APRIL 16–  
SATURDAY, APRIL 18 6:30 AM – 6:00 PM

## EXHIBITOR LOUNGE

**Level 0, Exhibit Hall A**

THURSDAY, APRIL 16–  
SATURDAY, APRIL 18 9:00 AM – 4:30 PM

## COAT AND LUGGAGE STORAGE

**Level 1, North Lobby, East side**

WEDNESDAY, APRIL 15 1:00 PM – 7:30 PM

THURSDAY, APRIL 16 –  
SATURDAY, APRIL 18 7:30 AM – 6:00 PM

SUNDAY, APRIL 19 7:30 AM – 1:00 PM

**Fee:** \$2/item/day (cash or credit card, no overnight storage)

**Please Note:** For everyone's safety, security will briefly screen all bags (i.e. purses, backpacks, and luggage) each time they are brought into the Convention Center.

## TICKETED EVENTS

The QR code on your meeting badge is your ticket to any events you have purchased admission for. The back of the badge will list all of your ticketed events.

**Ticketed events include:**

- First Things First: Your Smart Guide to IMMUNOLOGY2026™
- A Deeper Dive
- Connect with Me
- Sip and Learn
- Career Roundtable and Speed Networking
- Careers in Science Roundtable

- Professions in Biotech: Panel Discussion and Networking
- IMMUNOLOGY2026™ Gala (including any paid guests)

If you add any event to your registration, your QR code automatically updates to include that event. Additionally, you will be able to purchase a ticket at the door of the event and have immediate access, provided the event is not sold out.

## PODIUM PRESENTATIONS

All podium presenters are required to be in their assigned session rooms at least 15 minutes prior to the start of the session to check in with the AV technician.

## PODIUM PRESENTER RECORDINGS

Many podium presenters have been asked to give permission to record their talks. If you are a podium presenter and haven't received or completed the consent form, please check in with the Speaker Ready Room prior to your presentation to complete the form. Most presentations will automatically be recorded (not including Block Symposia). If you do not wish for your presentation to be included in AAI educational materials, it is important that you let us know.

## WI-FI

Complimentary Wi-Fi is available throughout all meeting rooms, common spaces, and the exhibit hall. Connect to the MCEC Wireless Network. There is no password needed.

## NURSING MOTHERS POD

### Level 1, near Room 159

A Mamava Lactation Suite is available in the convention center for the duration of the Annual Meeting. To unlock, download the Mamava app or use the convention center's house phone (located beside the pod) and dial "0" to request the access code.

## ATMs

There are three ATM locations within the MCEC:

- **Level 1, North Lobby, near the Registration Desk**
- **Level 1, near the Food Court and Bar**
- **Level 0, Exhibit Hall, near Room 050.**

## BADGE REPLACEMENT

Lost badges may be replaced for a fee of \$65 for the first request, and for the full on-site registration fee for subsequent requests.

## BUSINESS CENTER

### Level 1, near the Wicked Good Market

There is an on-site, full service (including poster printing) FedEx Office in the convention center. Services include: copying and digital printing, document production (including posters), supplies, computer services, electronic file submission, signage, custom printing services, document distribution, pack and ship options including express and ground service, fax service with delivery on incoming messages and desktop/word processing.

## CELL PHONE/DEVICE USAGE

Making cell phone calls in sessions is prohibited. If using a phone, tablet, or laptop for note taking during a session, please be sure to silence the device prior to entering the session room. If you must leave the session early to take or make a call, please use the rear entrance and exit quietly. Please do not talk on your way out of the session room.

## CELL PHONE CHARGING

There are several convenient charging stations with USB connections and power. There are also house phones located throughout the MCEC which are available for complimentary local and toll-free calls. Just dial "9" to get an outside line.

## CHILDREN

Children aged 13 and older are welcome to attend IMMUNOLOGY2026™ if accompanied by a registered adult. Children under the age of 13\* may not attend and are prohibited from entry into the Exhibit Hall, session rooms, or hallways in the meeting area. Children are not allowed to attend any social events.

\*Babies under age 1 who are being carried or in a baby carrier (i.e., baby sling; no car seats/strollers will be permitted) may accompany their parent/guardian in the Exhibit Hall only. Babies may not be placed on the floor or left unattended.

## DISABILITY ASSISTANCE

Registered meeting attendees with a disability or special need that may have an impact on their participation at the meeting should contact [meetings@aai.org](mailto:meetings@aai.org) or visit the AAI Info Booth in the North Lobby, to inquire about available accommodation. AAI cannot ensure the availability of reasonable accommodation without sufficient advance notification.

The Convention Center has a limited number of wheelchairs available for attendees, free of charge, on a first-come, first-served basis. A form of ID is required to sign out a wheelchair. Wheelchairs are not authorized to leave the property without the approval of the MCCA Public Safety department.

Service animals must be on a leash or harness, under the control of the handler, and must be housebroken. Handlers will be responsible for service animals' sanitary needs.

## EMERGENCY CONTACT INFORMATION

To report an emergency, please call 617-954-2222. This telephone number is a direct line to the MCEC Public Safety Command Center (PSCC), which is staffed twenty-four hours a day, seven days a week.

## FIRST AID STATION

### Level 1, North Lobby, East side

The Convention Center First Aid Station is located off the North Lobby, near room 150. The First Aid Station is designed for immediate medical care, providing treatment for minor injuries and handling health emergencies before professional transport arrives. Staffed by EMTs, it includes a stocked, private, and accessible area for care.

## LOST AND FOUND

During event operating hours, Lost and Found is located at the Public Safety desk on Level 1, North Lobby, at the Summer Street entrance. After event hours, lost and found items are stored in the Public Safety Command Center. To inquire about a lost item or report a found item, contact 617-954-2222, or go to [www.signatureboston.com/attend/public-safety](http://www.signatureboston.com/attend/public-safety).

## PARKING

The MCEC South Parking Lot is located at the rear of the facility which accepts credit cards and cash. There is no overnight parking at the MCEC. In-and-out privileges are only available to those who purchase Exhibitor Parking. ADA-accessible parking is available in the South parking lot. From there, take the handicap-accessible sidewalk to Level 0, where you can enter the MCEC through the Southeast lobby.

## PHOTOGRAPHS

Attendees are prohibited from photographing and recording (audio or video) scientific sessions, including posters. Violators will be asked to delete photographs or recordings and may risk expulsion from the meeting. Please note: During poster hours, if you have the permission of the author, you may take photographs of a poster. Authors are permitted to photograph their own posters.

## RESTROOMS

The Convention Center has numerous restrooms, with at least one set located on each floor and on both sides of the venue.



# IMMUNOLOGY EXPLAINED

## Connecting You to Science That Protects Your Health

Immunology Explained is AAI's public communications initiative that connects people with clear, science-based information.

Our expert ambassadors cover a range of immunology topics in blogs and videos to showcase how the immune system shapes every aspect of health.

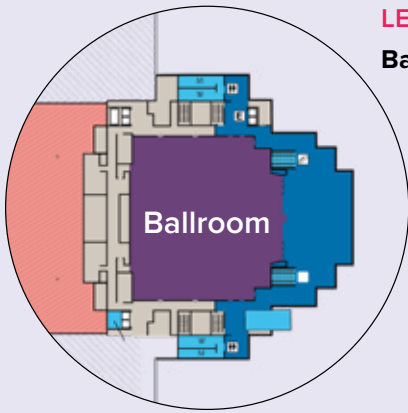
Learn more at [ImmunologyExplained.org](https://ImmunologyExplained.org)

**Want to  
become an  
Ambassador?  
Visit us at  
Booth 731**

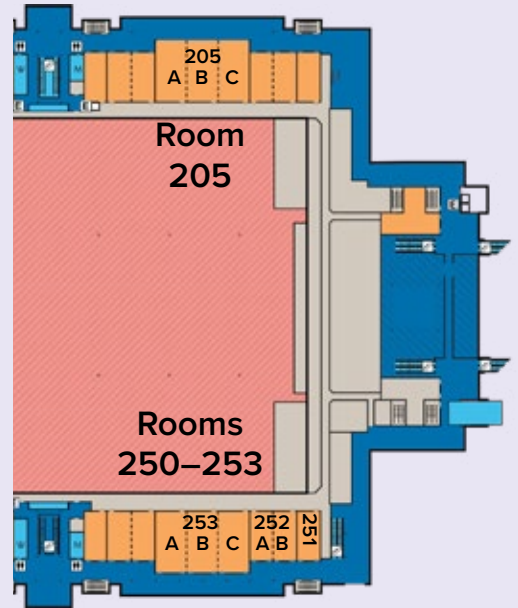
**Follow us on  
social media!**



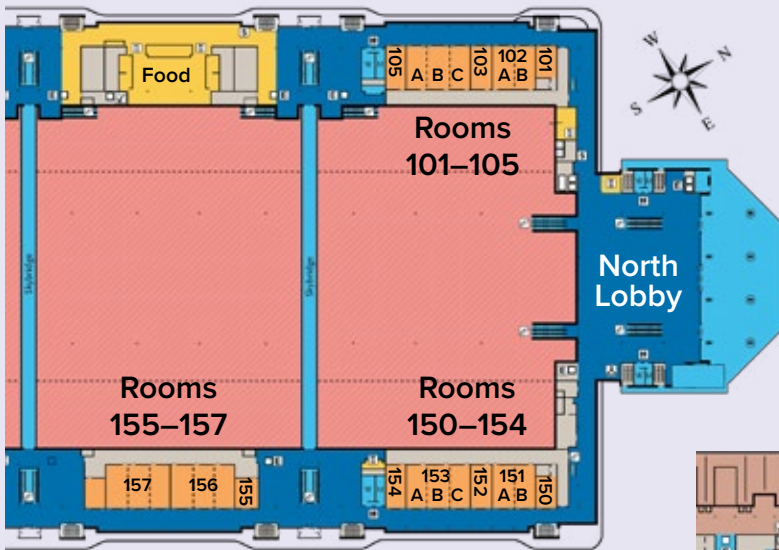
# CONVENTION CENTER MAP



**LEVEL 3**  
Ballroom

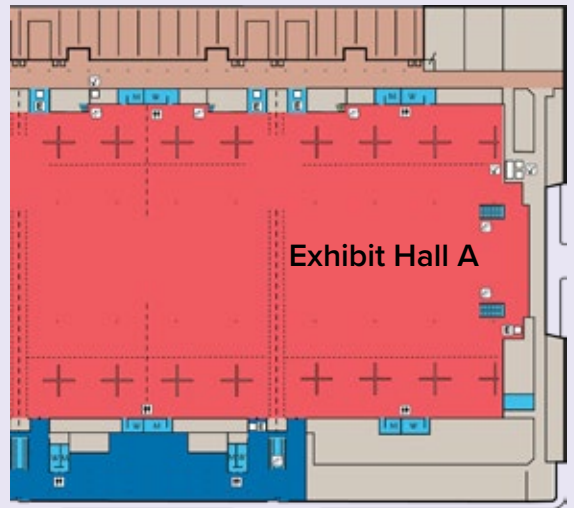


**LEVEL 2**  
Meeting Rooms



**LEVEL 1**

- |                      |                    |
|----------------------|--------------------|
| Registration         | First Aid Station  |
| Information Desk     | Business Center    |
| Meeting Rooms        | Sam Adams Pub      |
| Coat/Luggage Storage | Wicked Good Market |
| Nursing Mothers Pod  |                    |



**LEVEL 2**  
Exhibit Hall

# SAVE THE DATE



THE 110TH ANNUAL MEETING OF THE AMERICAN ASSOCIATION OF IMMUNOLOGISTS

# IMMUNOLOGY

## 2027™

# LOS ANGELES

## APRIL 30–MAY 4

### ABSTRACTS

OPEN FOR SUBMISSION

October 6–November 17, 2026

LATE-BREAKING OPEN

January 13–27, 2027

### REGISTRATION

EARLY REGISTRATION

January 5–March 30, 2027

REGULAR REGISTRATION

March 31–April 29, 2027

# Advancing Excellence in Spectral Cytometry. *Designed to Fit Your Research Needs.*

The ID7000 and FP7000 deliver a complete spectral cytometry solution, enabling high-parameter analysis and high-performance sorting within a unified workflow designed for consistency and ease of use.

## ID7000™ Spectral Cell Analyzer

Trusted by laboratories worldwide to deliver exceptional optical performance and seamless workflows for accelerating scientific discovery.

### Key features:

- Configurable with up to 7 lasers and 186 detectors
- Best-in-class AutoSampler enables walkaway operation
- SFA – Life Sciences Cloud Platform, a flow cytometry data analysis solution for handling high-parameter data



- 7 lasers
- 186 detectors
- 24-tube rack
- 96/384 well plates
- SFA Life Sciences Cloud Platform

- 6 lasers
- 182 detectors
- 3 nozzle sizes
- 6-way sorting
- 25k events per second



## FP7000 Spectral Cell Sorter

Delivering reliable performance and operational efficiency across a wide range of applications.

### Key features:

- Configurable with up to 6 lasers and 182 detectors
- Three nozzle sizes: 70 µm, 100 µm, and 130 µm
- 6-way sorting capability at 25,000 eps

Explore how the ID7000 and FP7000 enable workflows to meet the evolving demands of your laboratory.

[go.sonybiotechnology.com/hp-spectral](http://go.sonybiotechnology.com/hp-spectral)

